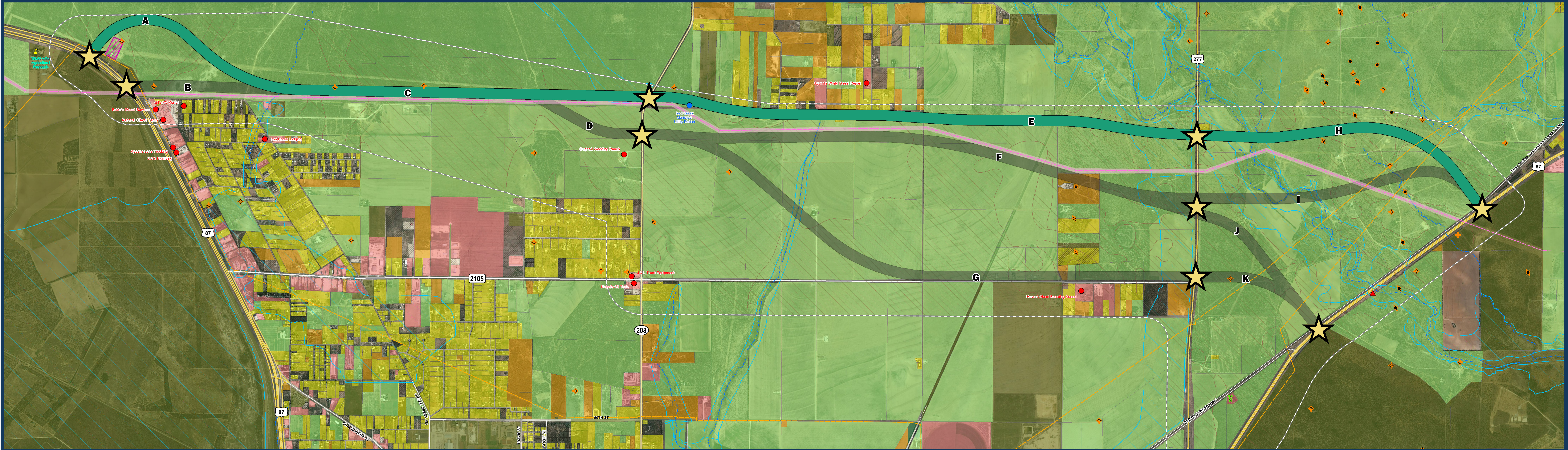




TEXAS DEPARTMENT OF TRANSPORTATION

PRELIMINARY CONCEPT 1 (A-C-E-H) - GREEN

Preliminary Concept Exhibit  
US 67/US 87 Northern Relief Route Study  
Tom Green County  
San Angelo District



- |  |                      |                                 |                              |                       |                     |
|--|----------------------|---------------------------------|------------------------------|-----------------------|---------------------|
| ★ Potential Future Grade Separated Interchange | ⦿ Permitted Location | ⦿ Canceled / Abandoned Location | 📶 Cell Tower                 | 🏭 Industrial Facility | 🏠 Parcel / Land Use |
| — Transmission Line Easement                   | ⦿ Dry Hole           | ⦿ Plugged Oil / Gas             | — Gas Pipeline               | 🌊 Wetland/Pond        | 🏡 Residential       |
| ▭ Study Area Boundary                          | ⦿ Oil                | ⦿ Injection / Disposal          | — Transmission Power Line    | 🌊 Waterway            | 🏢 Commercial        |
| 🏢 Community Facilities                         | ⦿ Plugged Oil        | ⦿ Shut-In Oil                   | — Transmission Line Easement | 🌊 FEMA Flood Zone     | 🌾 Farmland          |
| 🏢 Business                                     | ⦿ Plugged Gas        | 🚩 Potential NRHP-Eligible Site  | — Railroad                   | 🌊 Prime Farland       | 🌳 Rural             |
| 🏢 Municipal Building                           |                      |                                 |                              |                       | 🏢 Municipal/Exempt  |
| 🏢 School                                       |                      |                                 |                              |                       | 🌳 Utilities         |
|  |                      |                                 |                              |                       | 🌳 Vacant            |

Preliminary Concept 1 (A-C-E-H) - Green

0 500 1,000 2,000 3,000 4,000  
Feet

