



WELCOME

SL 335 (Echo Street to SE 3rd Avenue)

**Open House
Diversity Church
5631 Pavillard Drive
Amarillo, Texas 79108**

Why am I here?

- Learn about the project
- Provide comments on the proposed project



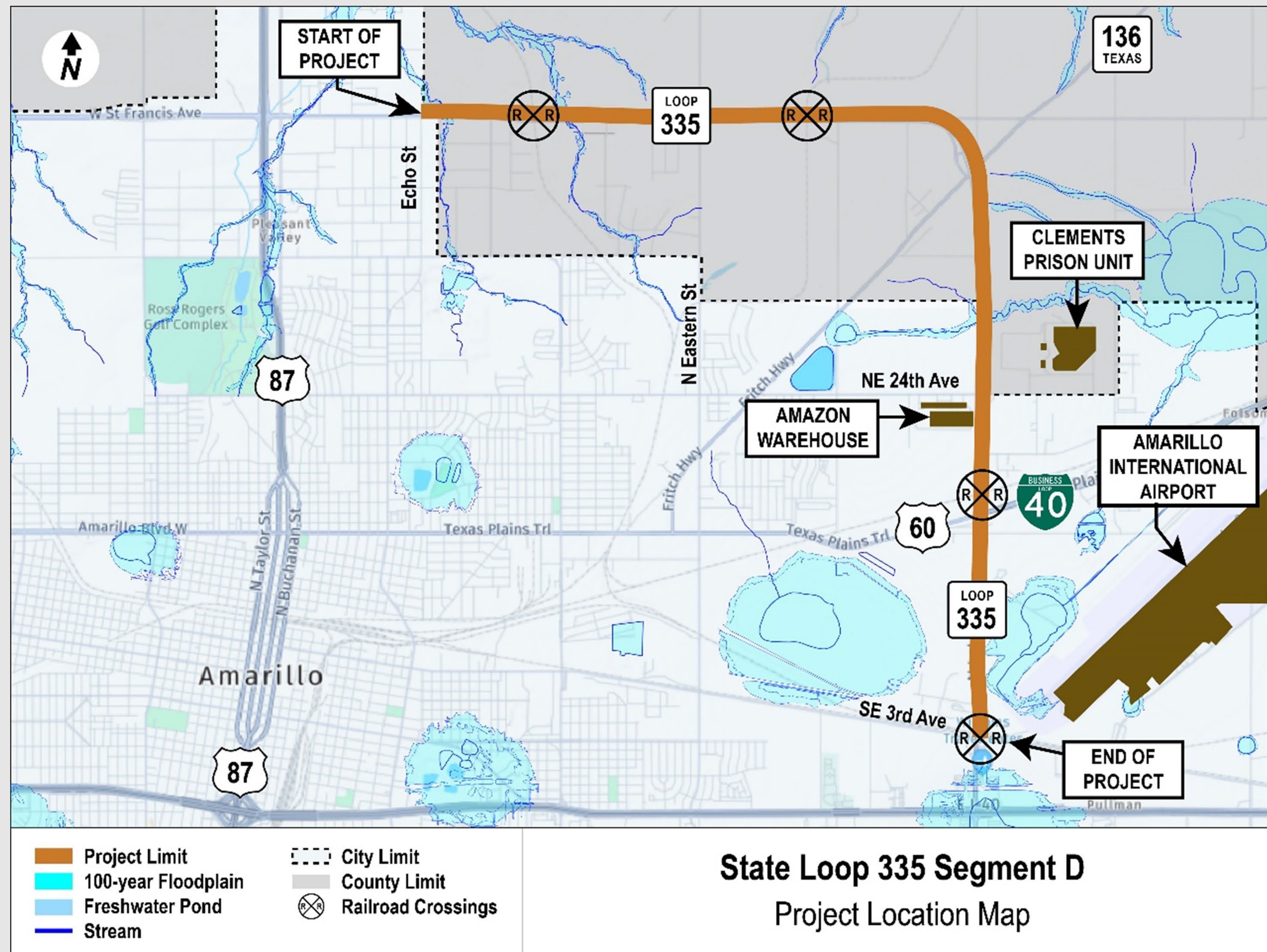
- Inform the public of project status and present recommendations
- Describe the project so the public can determine how they may be affected
- Provide the public an opportunity to provide input
- Develop a record of public participation

National Environmental Policy Act (NEPA)

The environmental review, consultation, and other actions required by applicable Federal environmental laws for this project are being, or have been, carried-out by TxDOT pursuant to 23 U.S.C. 327 and a Memorandum of Understanding dated December 9, 2019, and executed by FHWA and TxDOT.



Project Overview: Project Location Map



SL 335, Segment D Project Limits

- Echo Street to SE 3rd Avenue
- Approximately 9 miles

Cross Street Improvements

- SH 136
- US 60 (East Amarillo Boulevard)
- SE 3rd Avenue

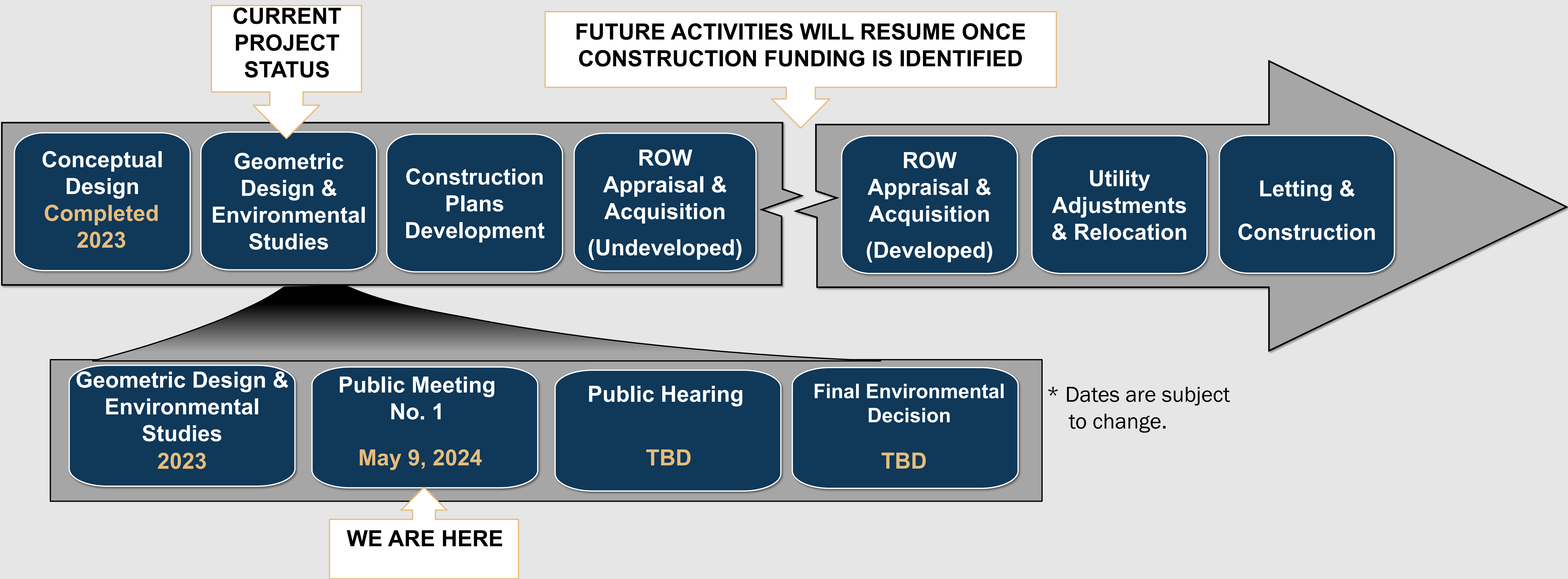


The need for SL 335, Segment D results from:

- Inadequate geometry for a freight corridor
- Crash rates are not as high as the statewide average for similar facilities
- However, fixed object crashes made up the highest percentage due to high speeds and the geometry of the corridor
- Providing bicycle and pedestrian accommodations according to federal and state guidelines

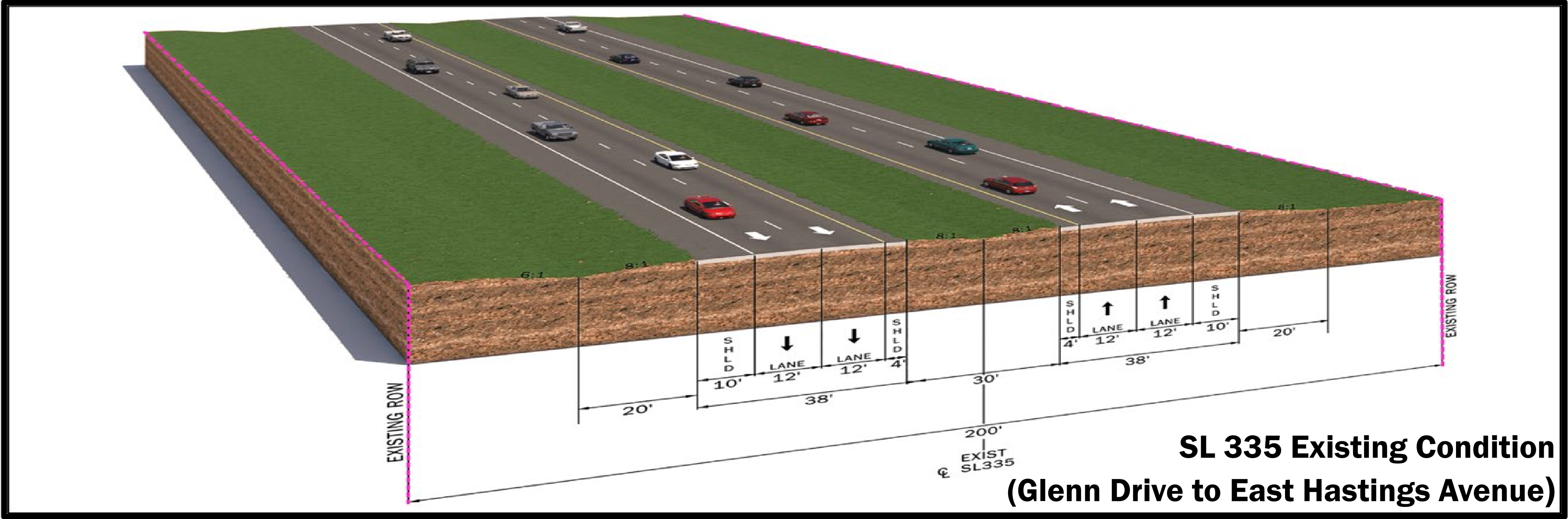
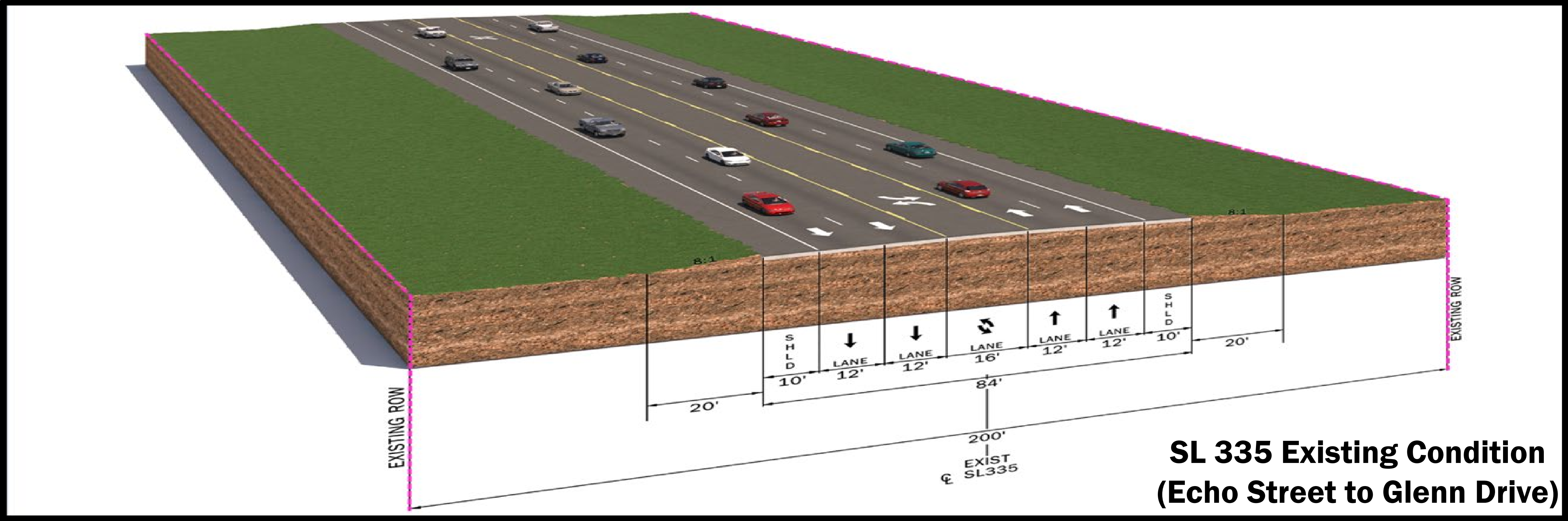
The proposed improvements to SL 335, Segment D include:

- Upgrading the facility to a controlled access highway with mainlanes, frontage roads, and ancillary improvements
- Improved vertical clearance
- Improved safety elements with a divided highway, shoulders, frontage roads, and drainage features
- Bicycle and pedestrian accommodation

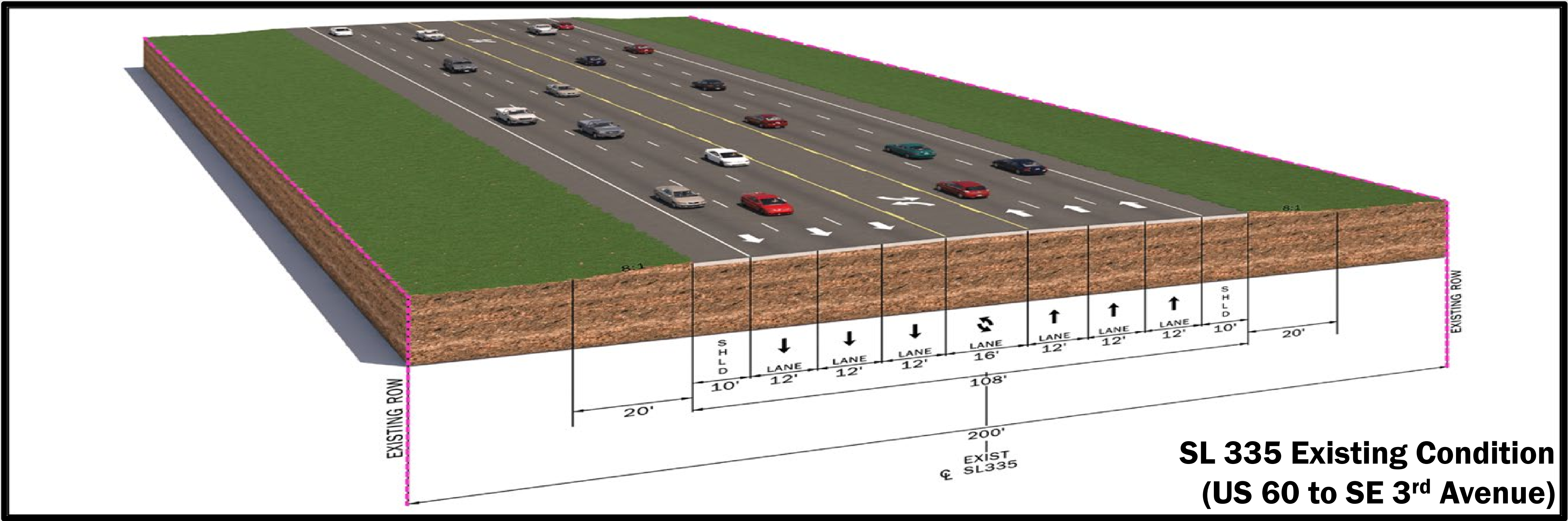
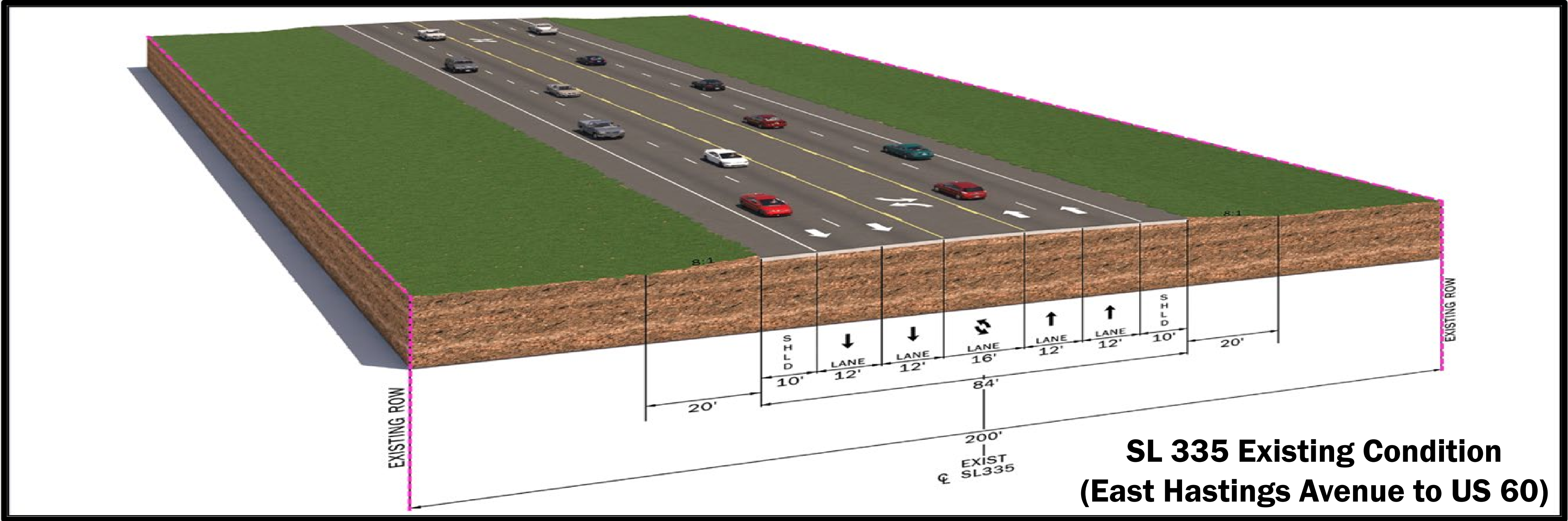


NOTE: Per the National Environmental Policy Act (NEPA), the environmental study for this project examines the anticipated impacts resulting from the proposed project. The NEPA phase includes public outreach activities conducted during project development to disclose the potential impacts (natural, cultural, human environment), propose mitigation strategies, and obtain additional stakeholder input. TxDOT must complete the study and have an approved environmental decision prior to final design plans, ROW acquisition, and construction.

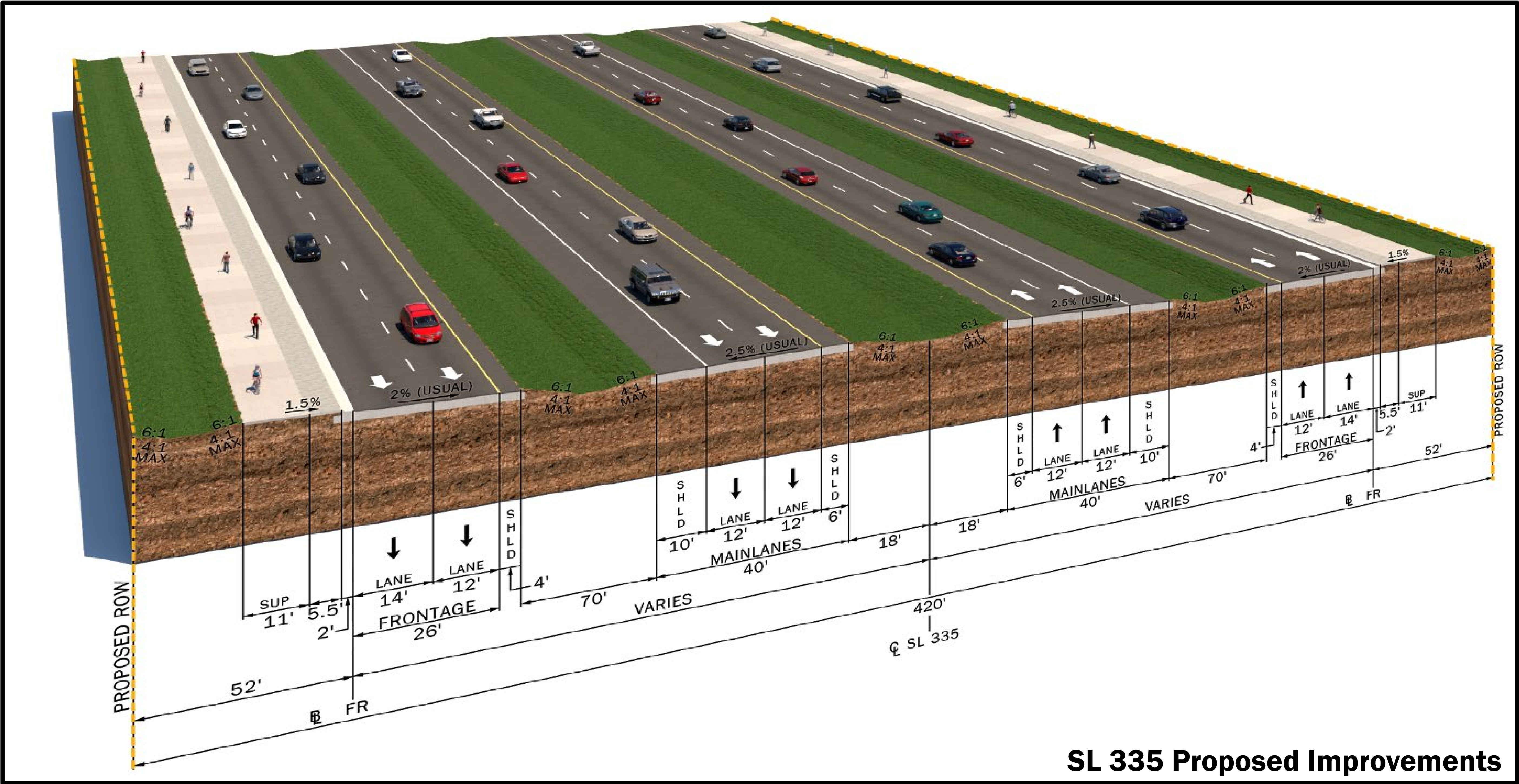
SL 335: Existing Typical Sections



SL 335: Existing Typical Sections

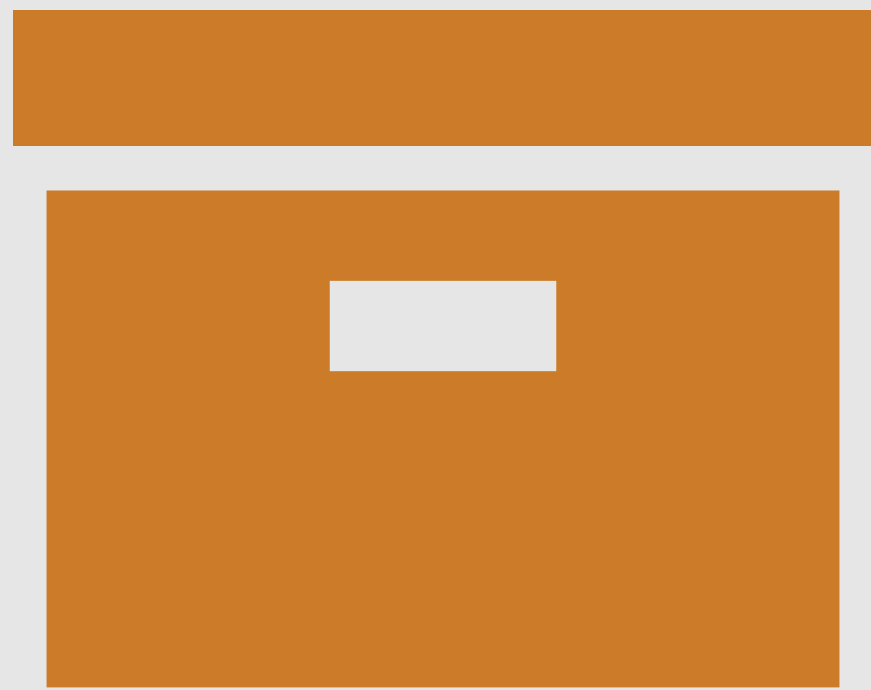


SL 335: Proposed Typical Sections



SL 335 Proposed Improvements

Desired Feedback and Comments Deadline



Comment Form	Download Comment Form	Email	Mail
Fill out a comment form in person and drop it in the comment box.	www.txdot.gov Keyword Search: SL 335 Segment D	AMA_PROJECT_INPUT@txdot.gov	Blair Johnson, P.E. District Engineer, Amarillo District TxDOT 5715 Canyon Drive Amarillo, Texas 79110

Comments must be submitted or postmarked by Friday, May 24, 2024