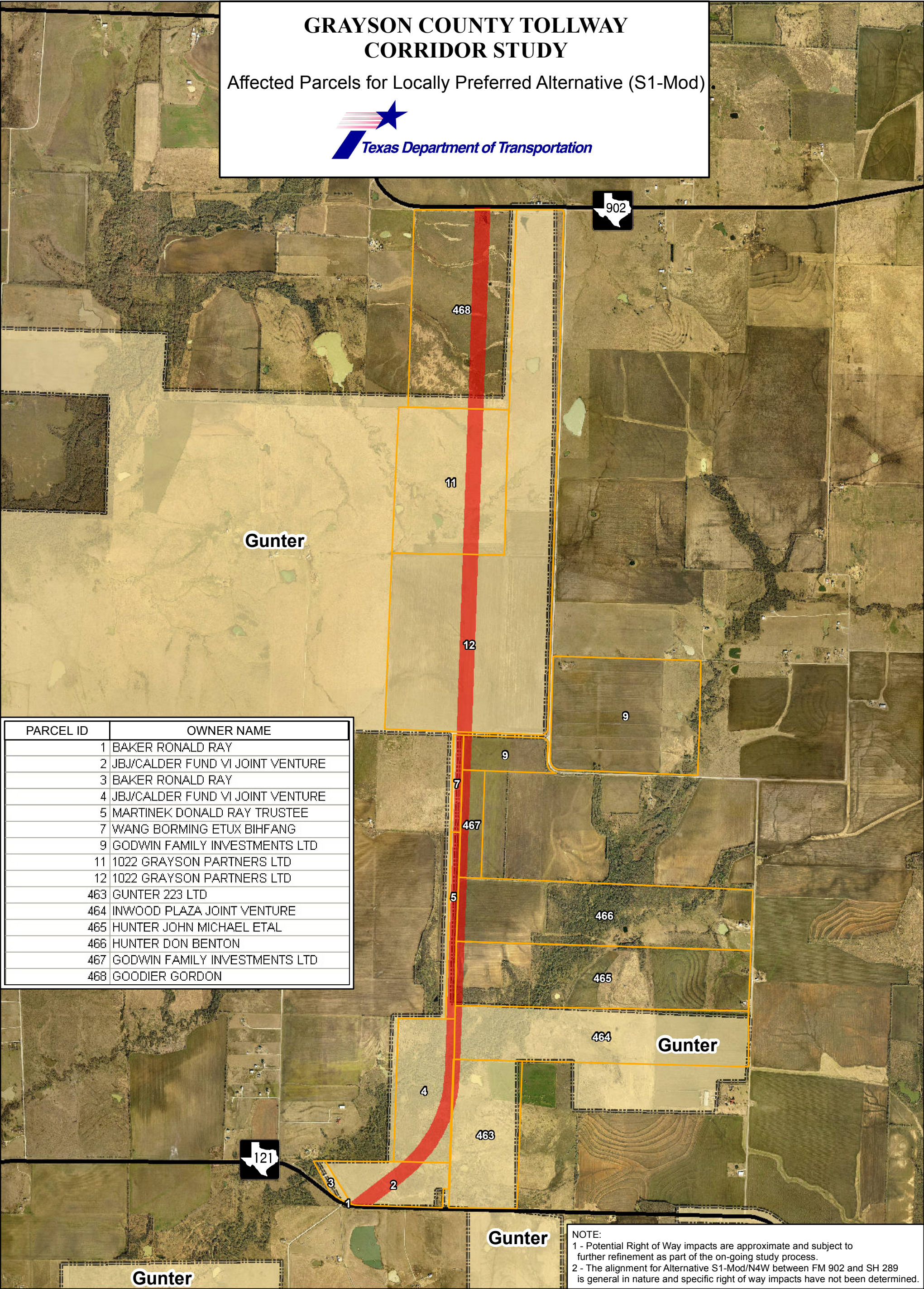


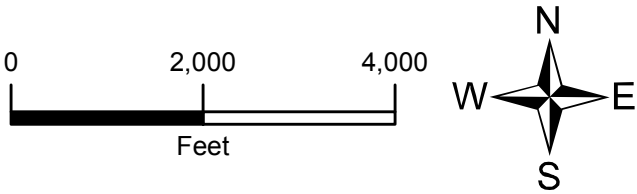
GRAYSON COUNTY TOLLWAY CORRIDOR STUDY

Affected Parcels for Locally Preferred Alternative (S1-Mod)



PARCEL ID	OWNER NAME
1	BAKER RONALD RAY
2	JB/CALDER FUND VI JOINT VENTURE
3	BAKER RONALD RAY
4	JB/CALDER FUND VI JOINT VENTURE
5	MARTINEK DONALD RAY TRUSTEE
7	WANG BORMING ETUX BIHFANG
9	GODWIN FAMILY INVESTMENTS LTD
11	1022 GRAYSON PARTNERS LTD
12	1022 GRAYSON PARTNERS LTD
463	GUNTER 223 LTD
464	INWOOD PLAZA JOINT VENTURE
465	HUNTER JOHN MICHAEL ETAL
466	HUNTER DON BENTON
467	GODWIN FAMILY INVESTMENTS LTD
468	GOODIER GORDON

NOTE:
1 - Potential Right of Way impacts are approximate and subject to further refinement as part of the on-going study process.
2 - The alignment for Alternative S1-Mod/N4W between FM 902 and SH 289 is general in nature and specific right of way impacts have not been determined.



Legend

- Parcel Boundary
- Locally Preferred ROW (S1-Mod)