



TEXAS DEPARTMENT OF TRANSPORTATION



LUBBOCK OUTER ROUTE

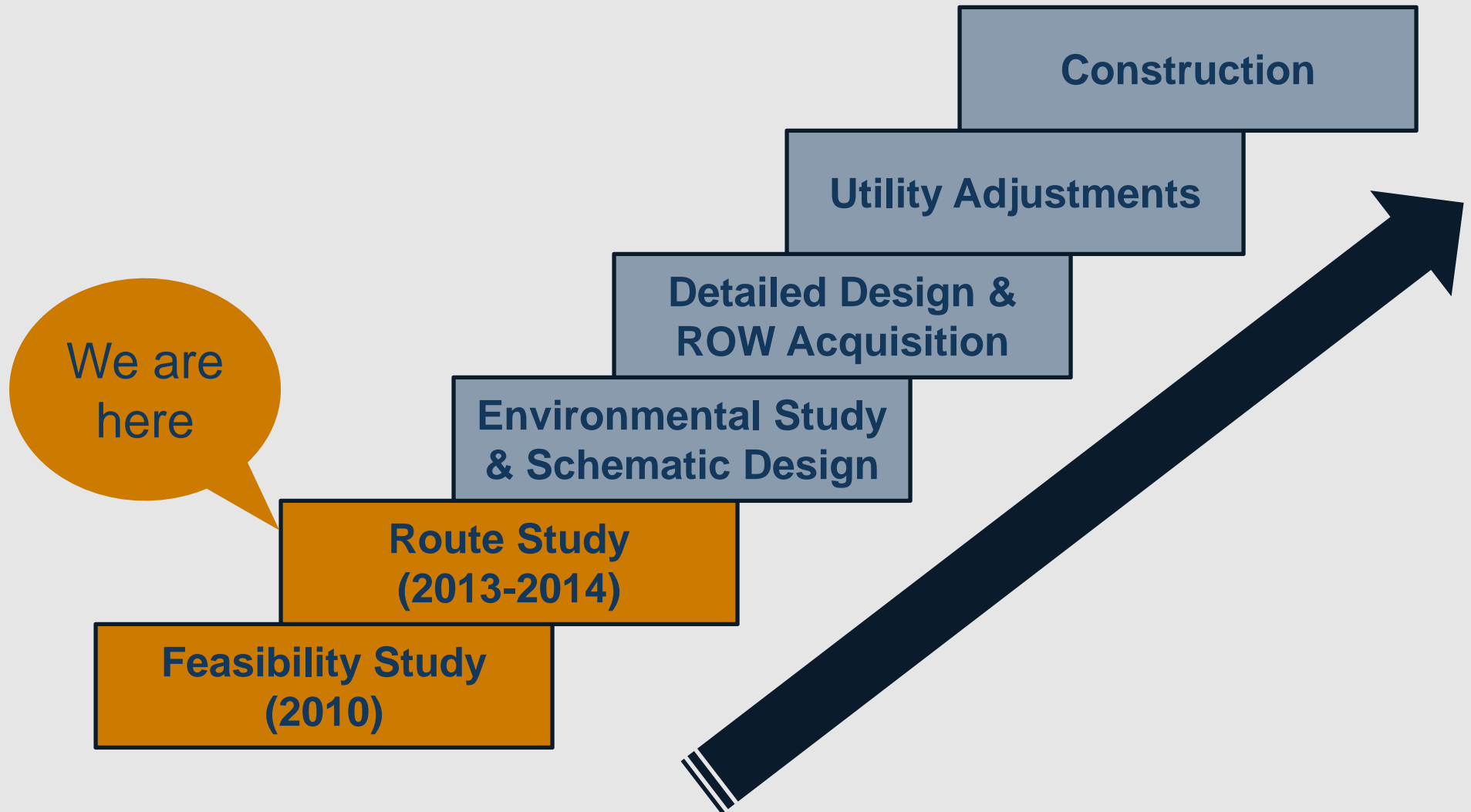
Public Meeting
February 25th, 2014



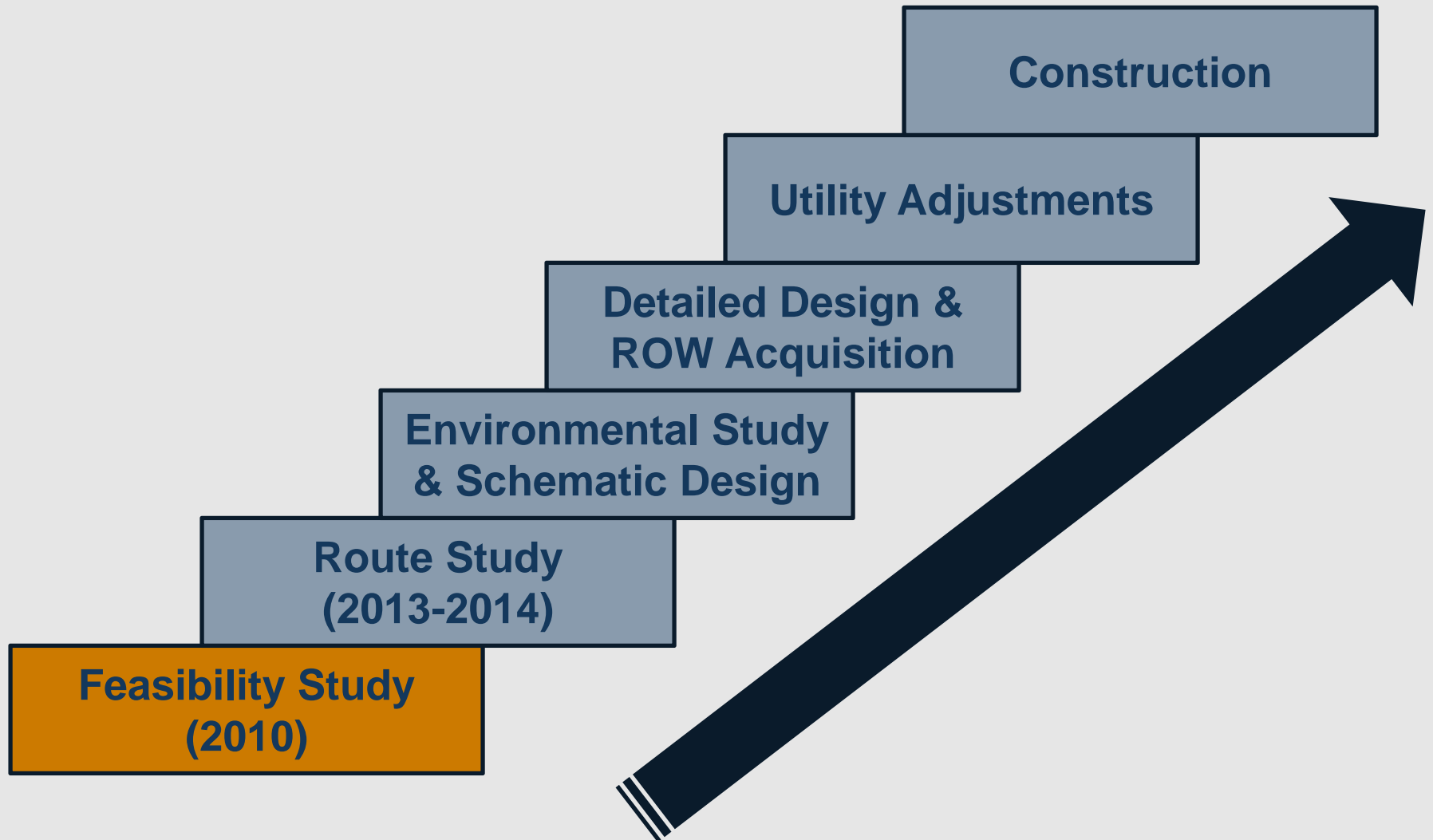
Table of Contents

1	Project Background	3
2	2010 Feasibility Study – Approach	4-8
3	Route Study – Overview	9-10
4	Route Study – Stakeholder Group	11-12
5	Route Study – Preliminary Options	13-18
6	Route Study – Preliminary Evaluation Criteria	19
7	Route Study – Next Steps	20
8	Questions and Open Comments	21-22

Project Background – Steps for Project Development



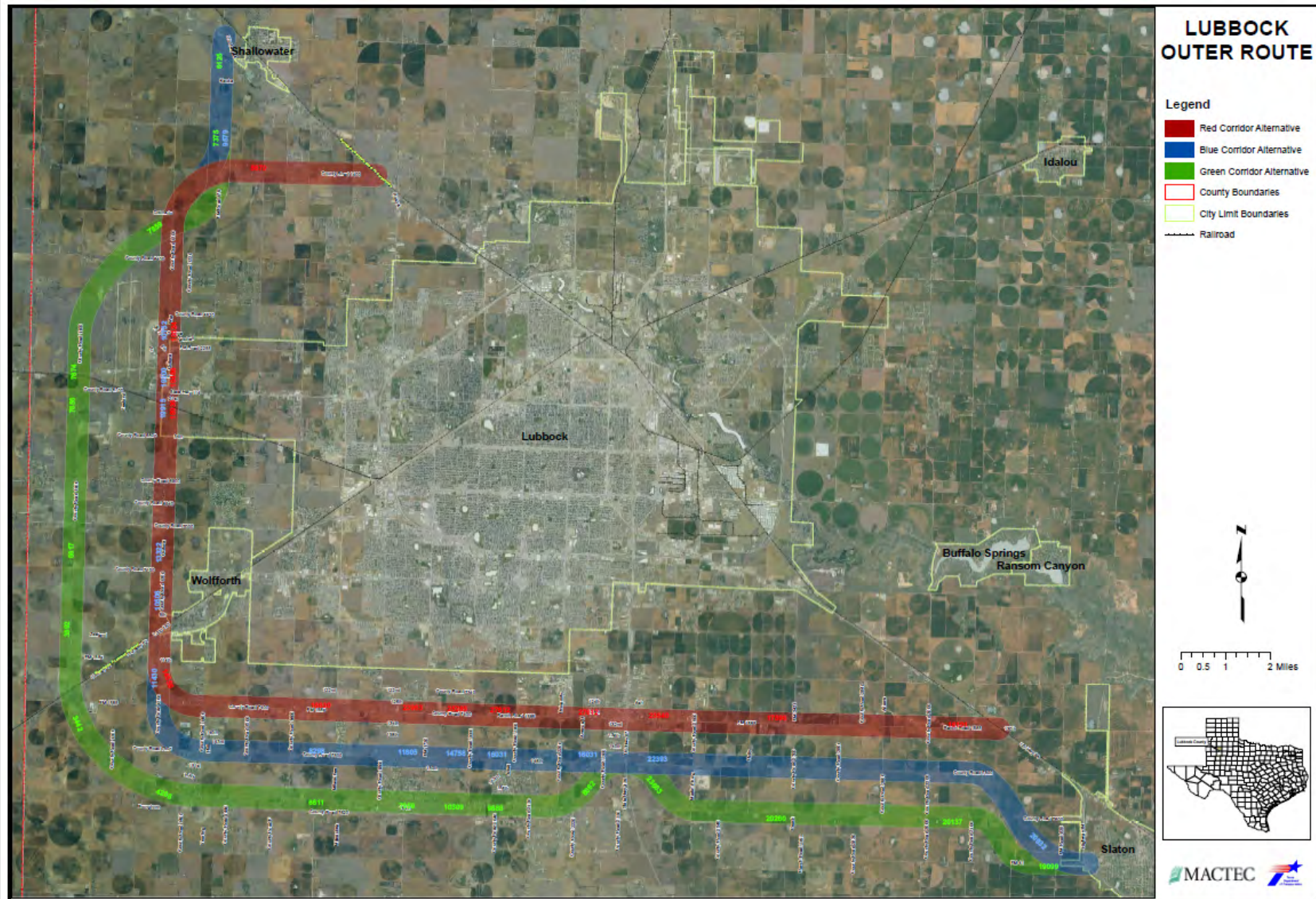
2010 Feasibility Study



2010 Feasibility Study – Approach

- The study was undertaken using a stepwise interdisciplinary approach and “fatal flaw analysis”
- Evaluation of alternatives was based on:
 - Traffic, access, and safety issues
 - Engineering issues
 - Social and economic conditions
 - Agricultural impacts
 - Rare, threatened, or endangered species
 - Cultural resources
 - Floodway/floodplains

2010 Feasibility Study – Project Map

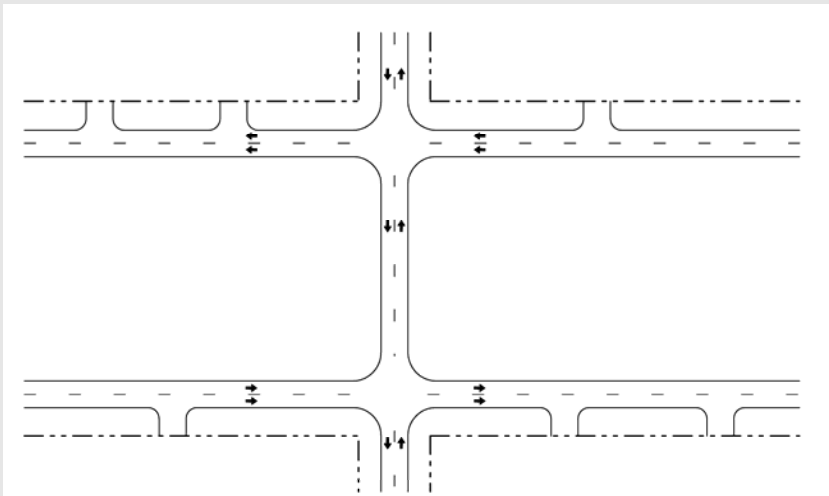


2010 Feasibility Study – Conclusion and Recommendations

- The preferred corridor was the Red Corridor
- Further evaluation of the Red and Blue Corridors at the Route Study Level was recommended
- Elimination of the Green Corridor alternatives from further evaluation was recommended
- The proposed Lubbock Outer Route was feasible as a 4-lane divided highway in 2030
- The proposed Lubbock Outer Route was marginally feasible as a freeway in 2050

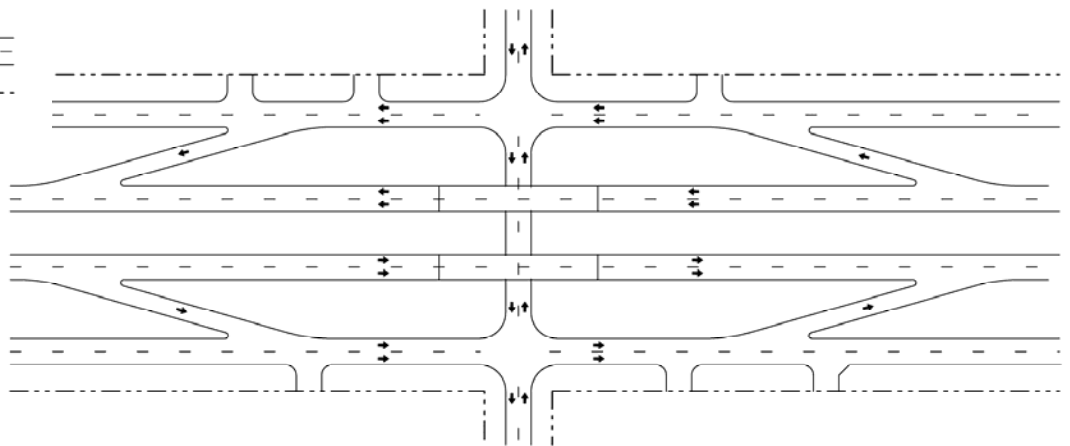
2010 Feasibility Study – Conclusion and Recommendations

- Preferred facility type was the interim 4-lane divided highway for the design year 2030 while preserving right-of-way needed for a future freeway

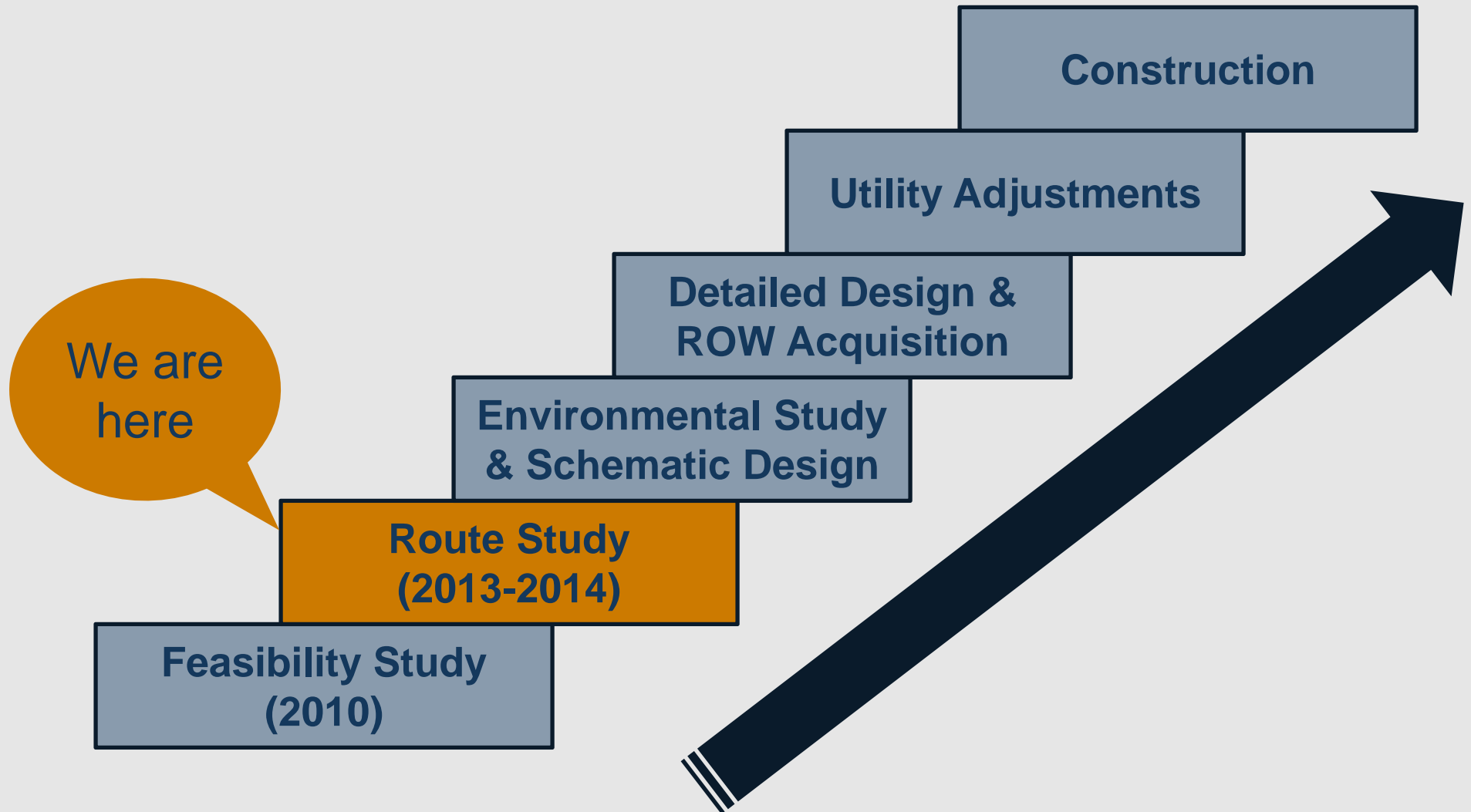


Four-Lane Divided
Interim - 2030

Freeway
Final - 2050



Route Study



Route Study – Overview

- More detailed investigation to determine specific routes within the corridor(s)
 - Traffic
 - Safety
 - Socio-economic
 - Environmental
 - Engineering
 - Public Involvement
- 12-month study time frame (Summer 2013 to Summer 2014)
- Four stakeholder meetings
- Two public meetings

Route Study – Stakeholder Group

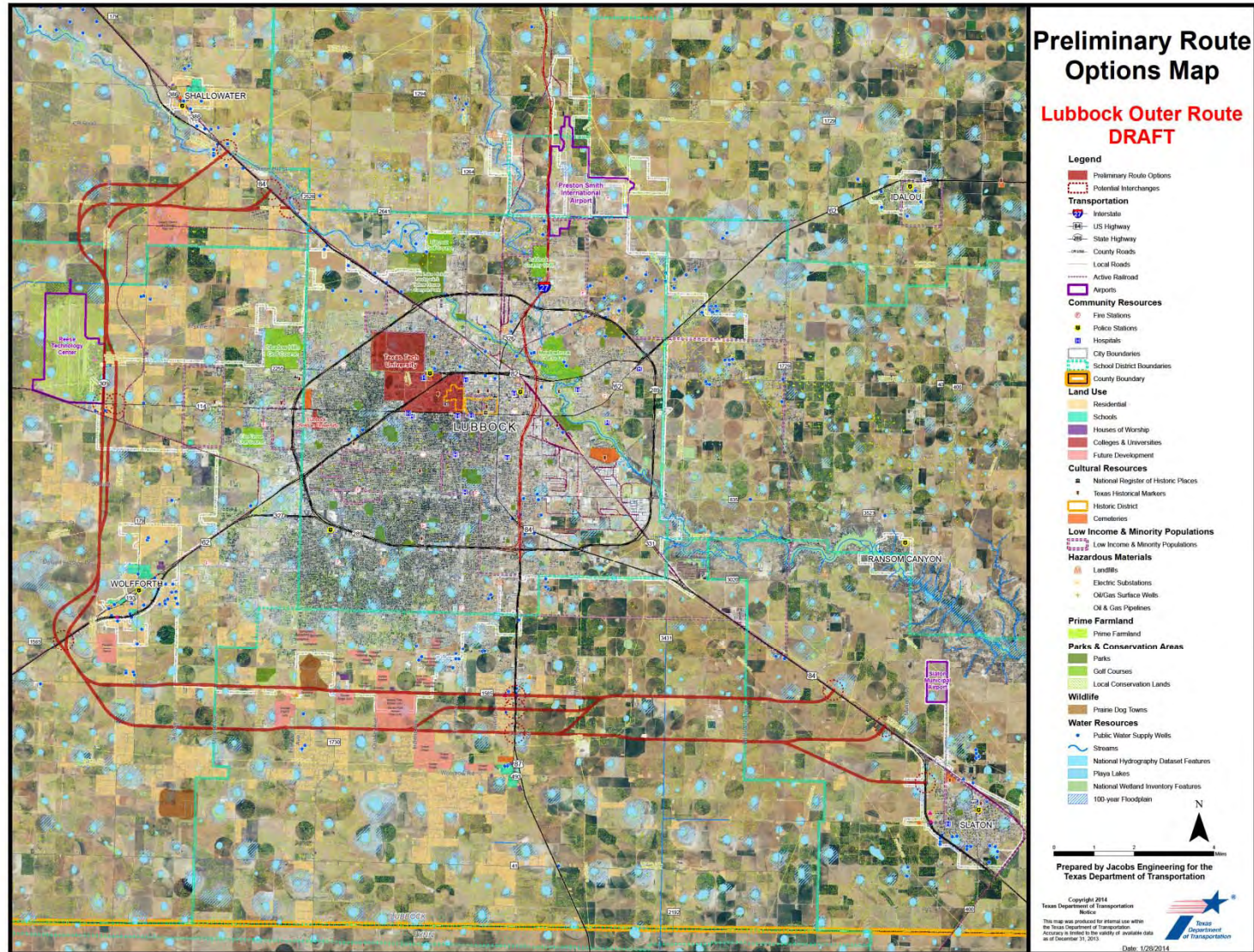
Name	Organization
Brian Baker	South Plains Community Action Association
Mark Heinrich	Lubbock County
Pat Henderson	Cooper ISD
H. David Jones	Lubbock Metropolitan Planning Organization
Mike Lamberson	City of Slaton
George McMahan	West Texas Home Builders Association
Darrell Newsom	City of Wolfforth
Nick Olenik	Lubbock County
Drew Paxton	City of Lubbock
Mayor Glen Robertson	City of Lubbock
Stacy Smith	Plains Cotton Growers
Dr. David Vroonland	Frenship ISD
Neil Welch	City of Lubbock
Mayor Robert Olmsted Jr.	City of Shallowater

Route Study – Stakeholder Meetings

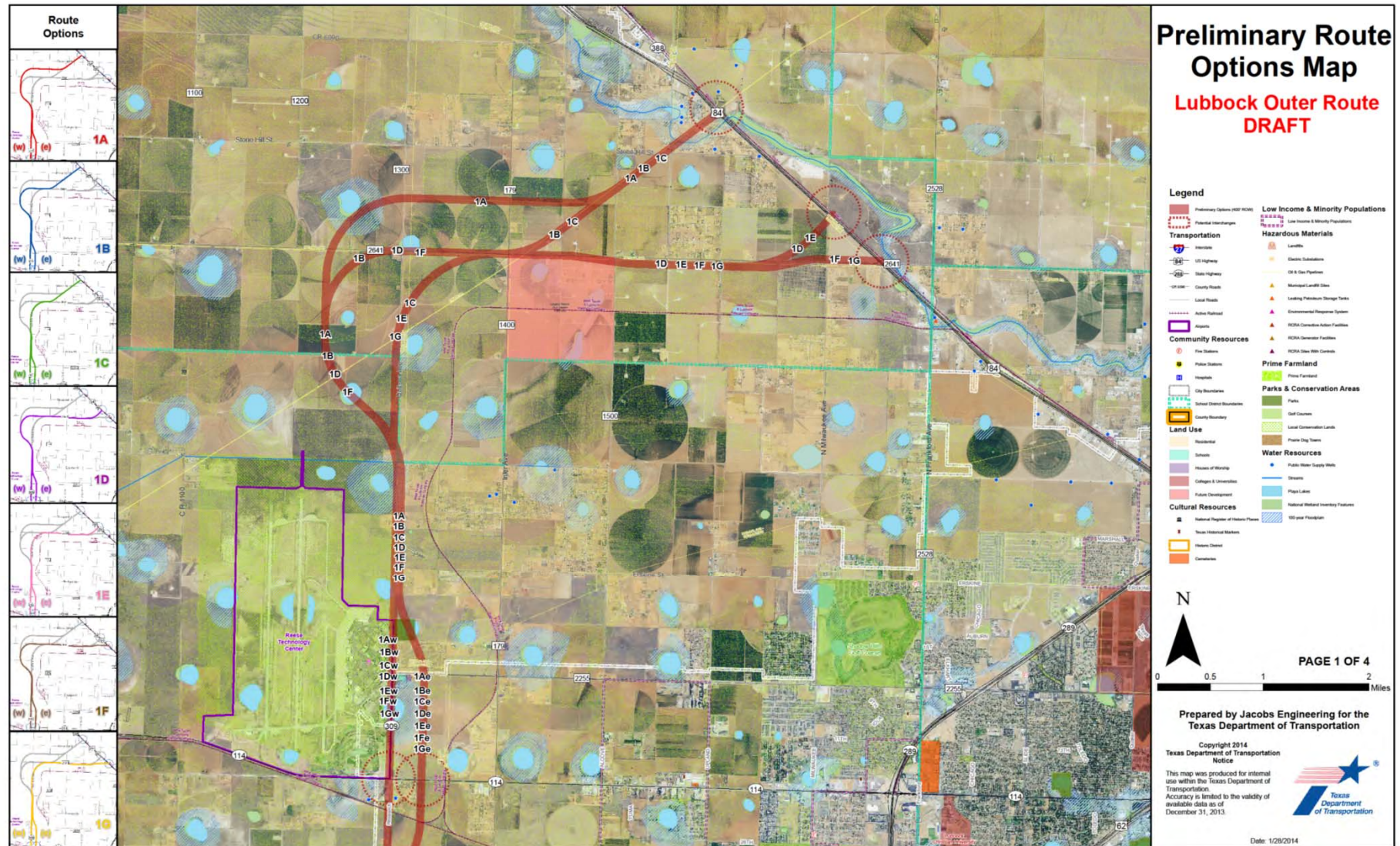
- Kick-off Meeting – July 2013
 - History and Overview of the Study
 - Discuss Project Schedule
- Second Meeting – October 2013
 - Identify Constraints and Features
 - Review Preliminary Options
 - Review Draft Evaluation Criteria
 - Determine Date and Location of Public Meeting
- Third Meeting – January 2014
 - Review Revised Options for Public Meeting



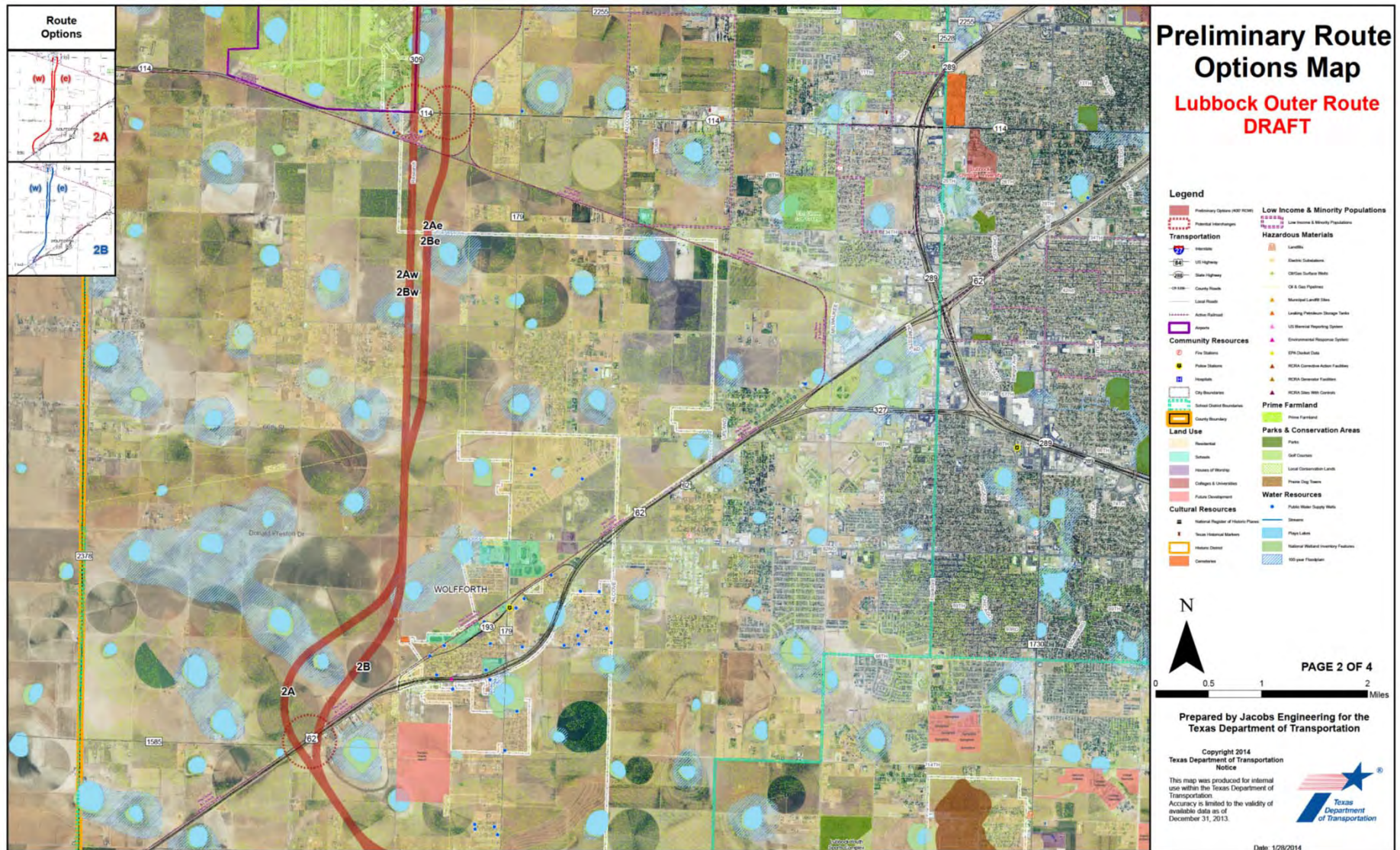
Route Study – Preliminary Options



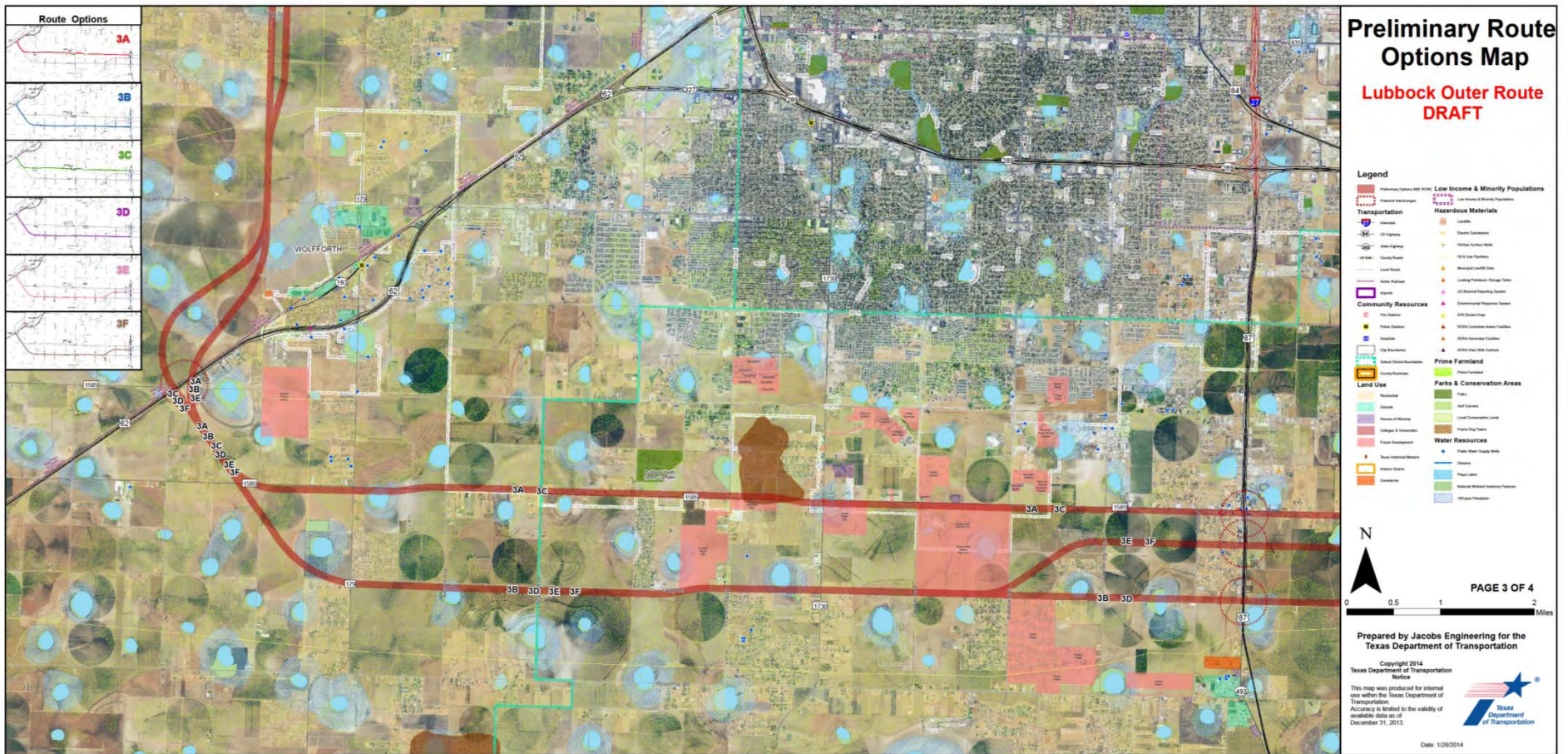
Route Study – Segment 1 Options



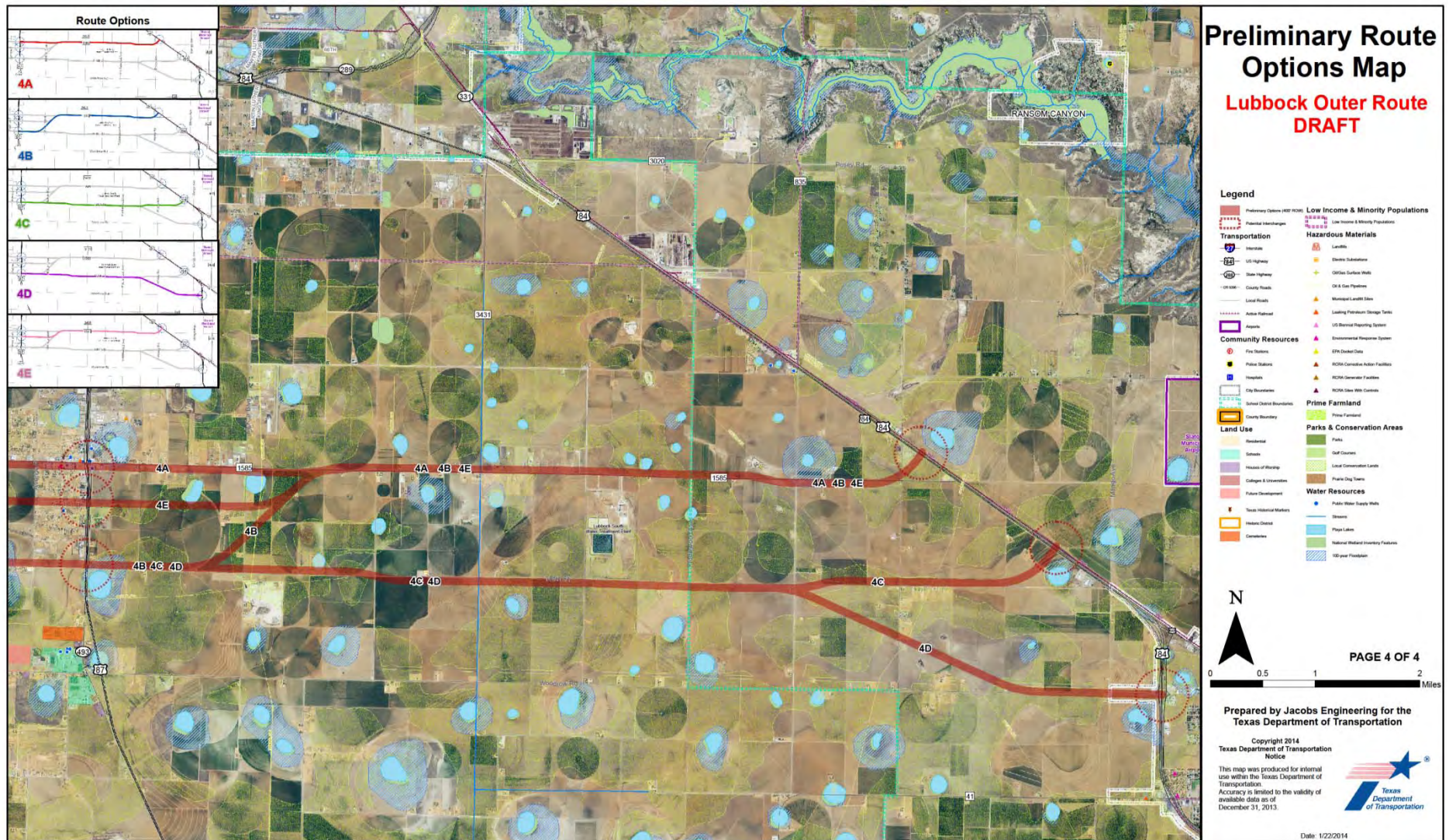
Route Study – Segment 2 Options



Route Study – Segment 3 Options



Route Study – Segment 4 Options



Route Study – Typical Sections

Lubbock Outer Route



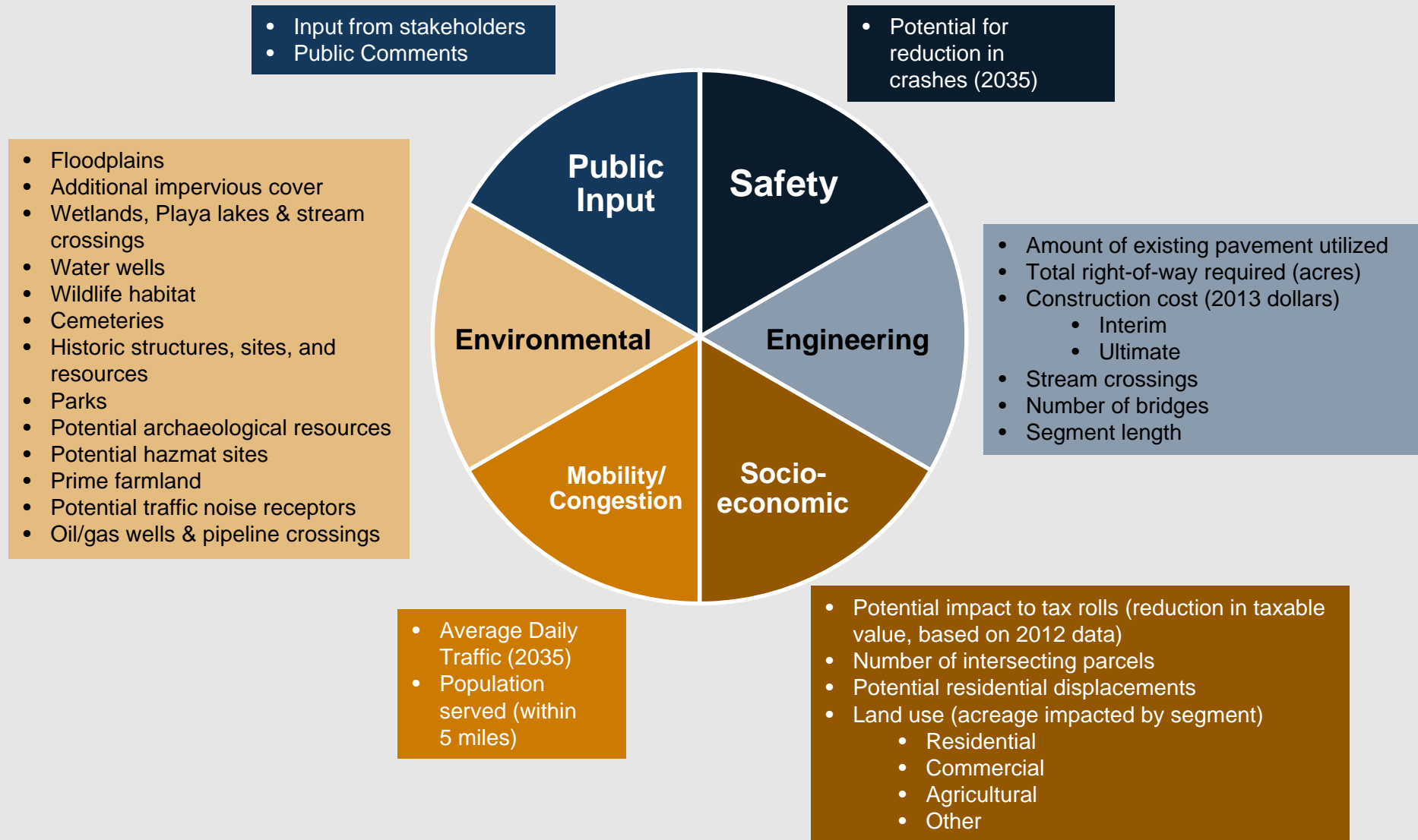
Initial Construction*: Four-lane Divided Highway (2030)



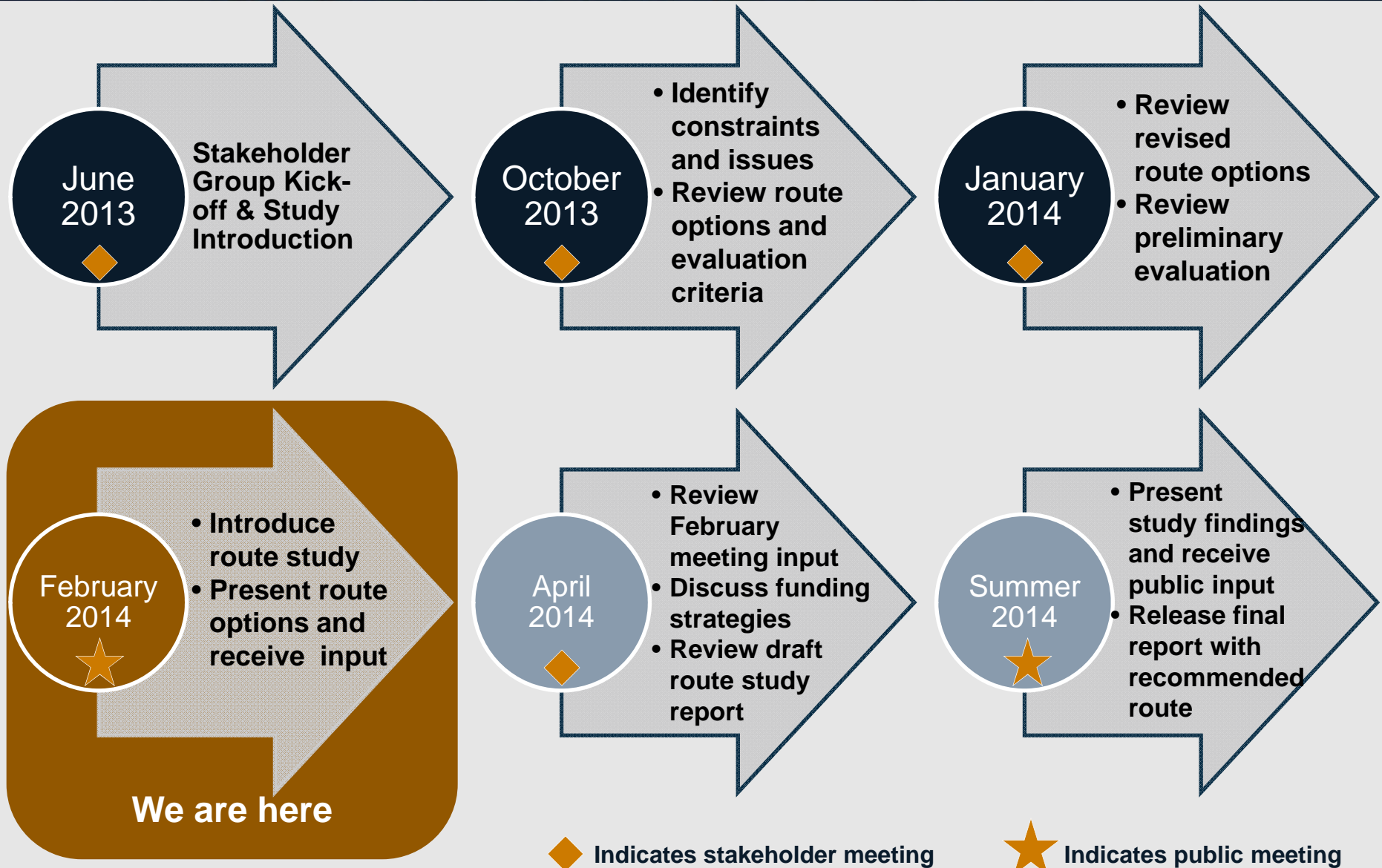
Ultimate Construction*: Freeway with Frontage Roads (2050)

*Draft for illustrative purposes only; subject to change based on funding availability and actual site conditions

Route Study – Evaluation Criteria



Route Study – Schedule & Next Steps



Questions...?

- Written comments to be sent by March 7, 2014

Submit a comment card at the meeting today or send your comments by:

- E-mail: steven.warren@txdot.gov
- Fax: (806) 748-4380
- Mail: 135 Slaton Road, Lubbock, TX 79404-5201
- Website: <http://www.txdot.gov/inside-txdot/projects/studies/lubbock/outer-route.html>
- Please provide your name and address at the sign-in table if you would like to be included on the project mailing list.

Open Comments

- To present your comments related to the Lubbock Outer Route, please fill out a speaker card and return it at the sign-in table

TARJETA DE REGISTRO PARA ORADORES	
	Libramiento Vial p Desde el noroeste de l Exhibició 25 de F
Instrucciones: Si desea participar como y regrésela a la Mesa de Registro para	
Nombre (completo): _____	
Dirección: _____	
Institución que representa (opcional): _____	
Cada orador será limitado a tres (3) minutos s	
(Según el Código de Transporte de Texas, § 2	
<input type="checkbox"/> Soy empleado de TxDOT.	
<input type="checkbox"/> Podría beneficiar monetariamente del proyect	

SPEAKER REGISTRATION CARD	
	Lubbock Outer Route Study: US84 northwest to US84 southeast of Lubbock Open House Public Meeting February 25, 2014
Instructions: If you wish to speak, please complete this card and return it to the Speaker Registration Table.	
Name (print): _____	
Address: _____	
Representing (optional): _____	
Each speaker will be limited to three (3) minutes and there is no transferring of time to others.	
Check each of following that apply to you: (Per Texas Transportation Code, §201.811(a) (5))	
<input type="checkbox"/> I am employed by TxDOT. <input type="checkbox"/> I do business with TxDOT.	
<input type="checkbox"/> I could benefit monetarily from the project or other items about which I am commenting.	